



MONTHLY MEMBERSHIP PROGRESS REPORT

District C 1

Results as of: 07/31/2018

GMT: GORDON ZIEGLER

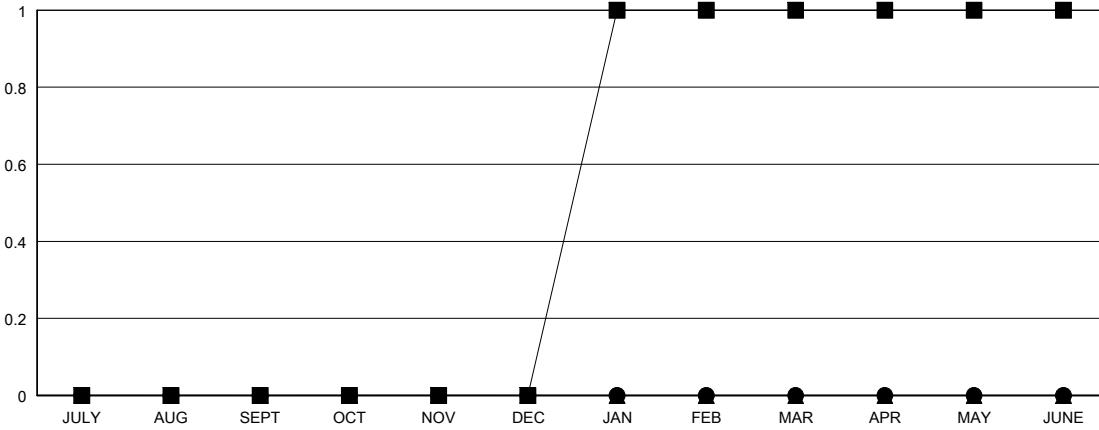
LOCATION ALBERTA

GMT CA

Clubs			
RESULTS FOR 2018-2019			
QUARTER	NEW CLUB GOAL	NEW CLUBS	DROPPED CLUBS
JULY/AUG/SEPT	0	0	0
OCT/NOV/DEC	0	0	0
JAN/FEB/MAR	1	0	0
APR/MAY/JUNE	0	0	0

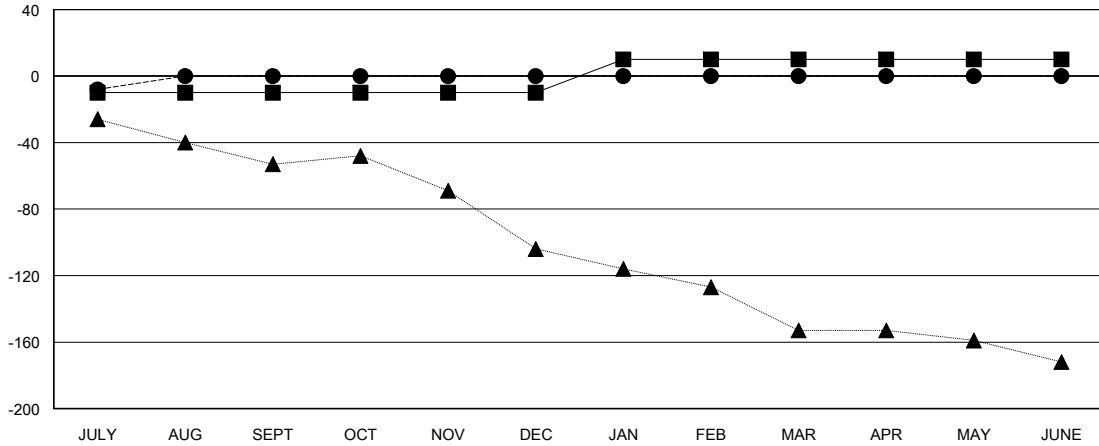
Members			
RESULTS FOR 2018-2019			
QUARTER	MEMBER GROWTH NET GOAL	MEMBER GROWTH ACTUAL	DROPPED MEMBERS ACTUAL (including transfers)
JULY/AUG/SEPT	-10	3	9
OCT/NOV/DEC	0	0	0
JAN/FEB/MAR	20	0	0
APR/MAY/JUNE	0	0	0

GOALS AND ACTUAL NEW CLUBS CUMULATIVE



- - CURRENT YEAR GOALS FOR NEW CLUBS
- - CURRENT YEAR ACTUAL NEW CLUBS
- ▲ - LAST YEAR ACTUAL NEW CLUBS

GOALS AND ACTUAL MEMBERS CUMULATIVE



- - MEMBER GROWTH NET GOAL
- - MEMBER GROWTH ACTUAL
- ▲ - LAST YEAR MEMBERSHIP ACTUAL

DROPPED CLUBS: 0	1 CLUBS OF 99 ADDED 1 OR MORE NEW MEMBERS	GENDER DISTRIBUTION
		MALE 1,257 (64.30%)
		FEMALE 698 (35.70%)
		Women Percentage Fiscal Year Goal: 1%
DROPPED MEMBERS	CLICK HERE FOR CUMULATIVE MEMBERSHIP DATA	TOTAL FAMILY UNIT MEMBERS 407
DECEASED 5		FAMILY MEMBERS PAYING HALF DUES 210
CLUB CANCELLED 0		
OTHER 4		
TOTAL 9		